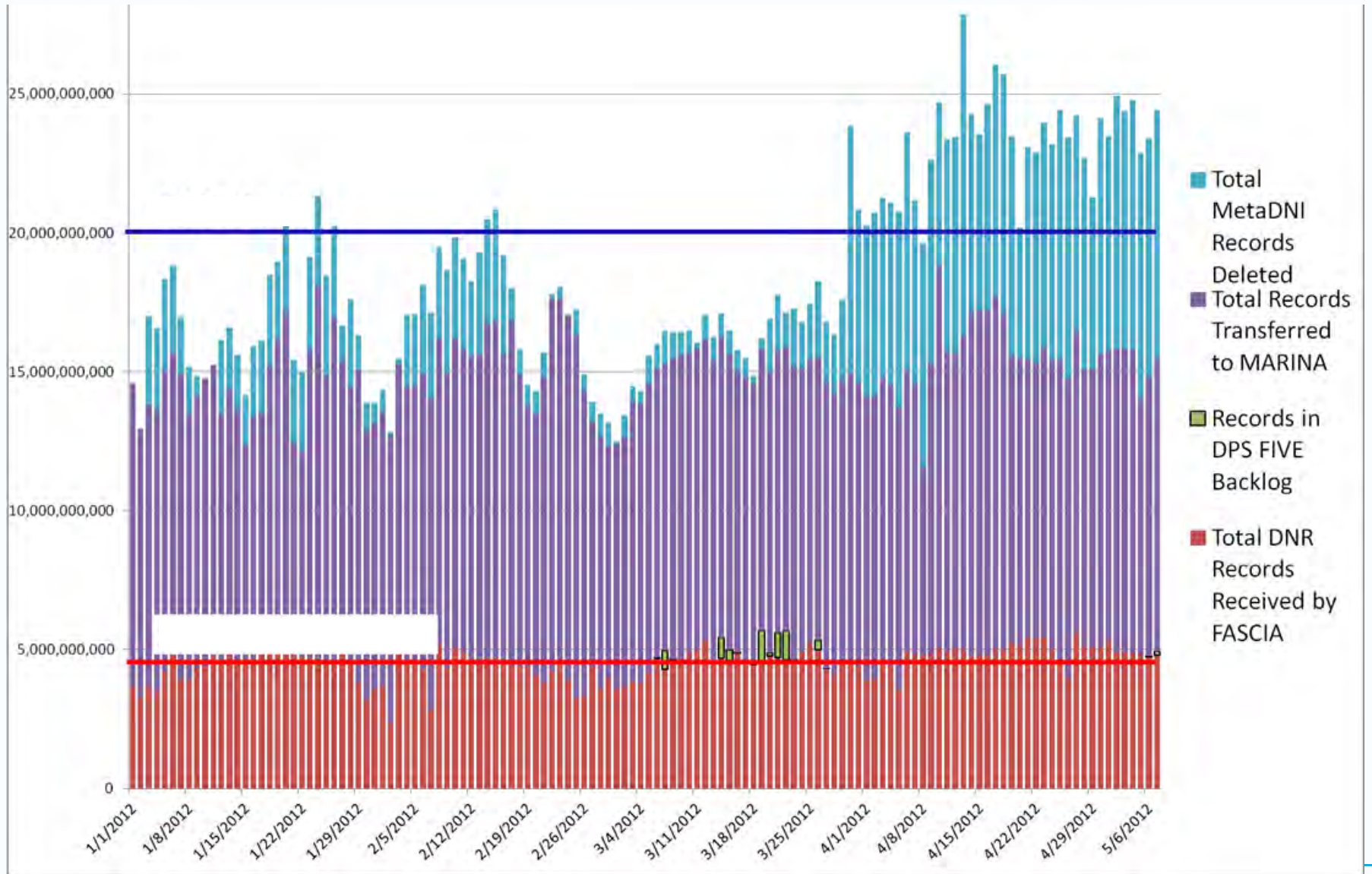


Example of Current Volumes and Limits



Dupe Methodology

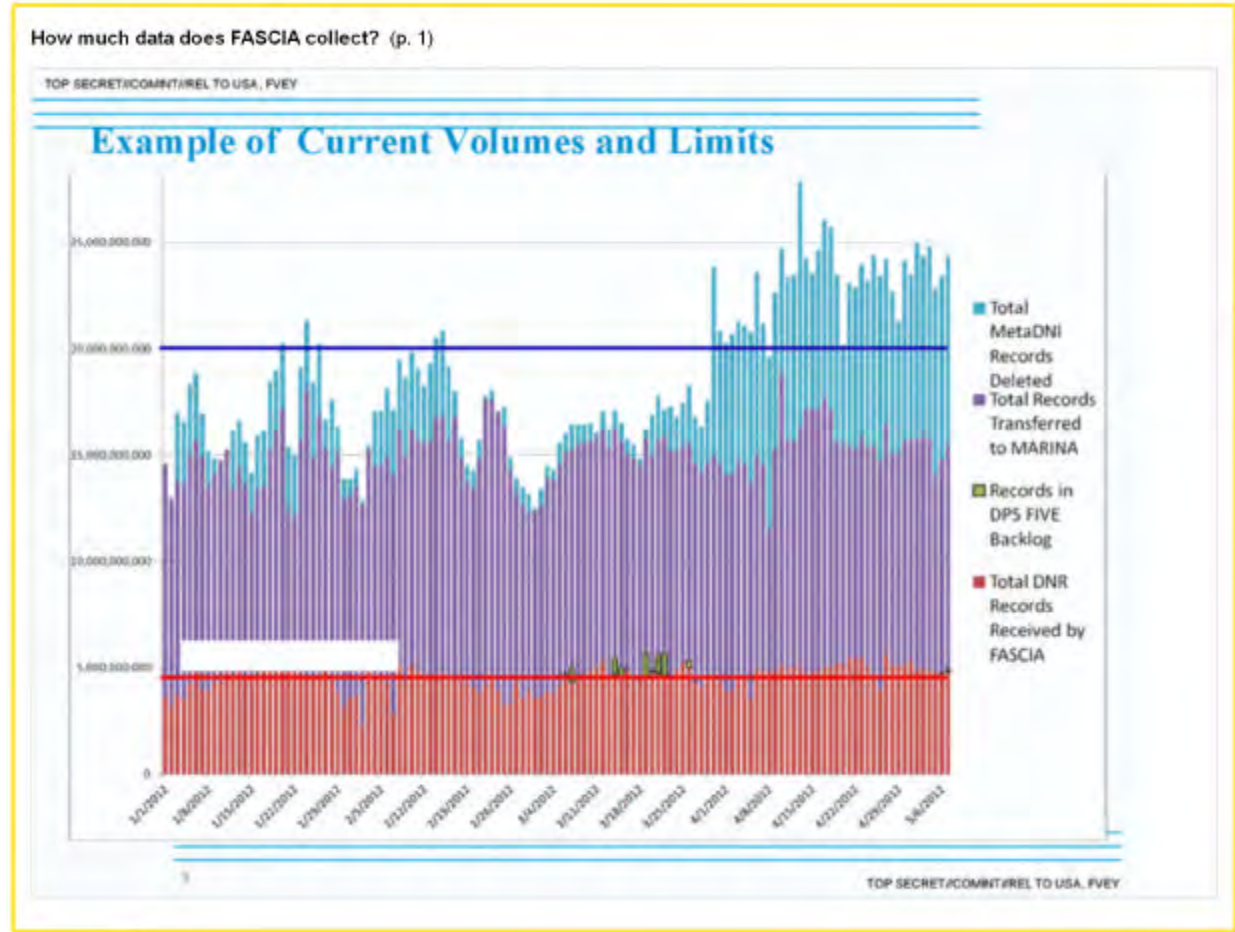
Compare records within various time windows that share identical selectors and locations, specifically:

LAC	CellID	VLR	DesigChannelID
IMEI	ESN	IMSI	MIN
TMSI	MDN	CLI	ODN
MSISDN	RegFMID	CdFMID	CgFMID
RegGID	CdGID	RegIID	Kc
CdIID	CgIID	MSRN	Rand
Sres	Opcode	RQ1	XR1
Q_CK1	Q_IK1	AU1	NewPTMSI
OSME	DSME	RTMSI	PDP_Address
TEID	TLLI	PTMSI	PDDG

What is FASCIA?

2 Pages - Contributed by Matt DeLong, Washington Post - Dec 04, 2013

FASCIA is the National Security Agency's enormous database containing trillions of device-location records that are collected from a variety of sources.



What does FASCIA collect? (p. 2)

TOP SECRET//COMINT//REL TO USA, FVEY

Dupe Methodology

Compare records within various time windows that share identical selectors and locations, specifically:

LAC	CellID	VLR	DesigChannelID
IMEI	ESN	IMSI	MIN
TMSI	MDN	CLI	ODN
MSISDN	RegFMID	CdFMID	CgFMID
RegGID	CdGID	RegIID	Kc
CdIID	CgIID	MSRN	Rand
Sres	Oncode	ROI	XR1

Q_CK1	Q_IK1	AU1	NewPTMSI
OSME	DSME	RTMSI	PDP_Address
TEID	TLLI	PTMSI	PDDG

28

TOP SECRET//COMINT//REL TO USA, FVEY

LAC (p. 2)

LAC	CellID	VLR	DesigChannelID
-----	--------	-----	----------------

CellID (p. 2)

CellID	VLR	DesigChannelID
--------	-----	----------------

VLR (p. 2)

VLR	DesigChannelID
-----	----------------

IMEI (p. 2)

IMEI	ESN	IMSI	MIN
------	-----	------	-----

IMSI (p. 2)

IMSI	MIN
------	-----

MSISDN (p. 2)

MSISDN	RegFMID	CdFMID	CgFMID
--------	---------	--------	--------